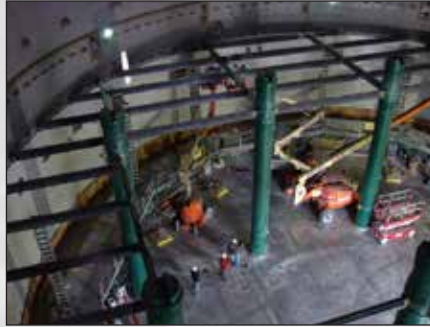


Construction/Field Services

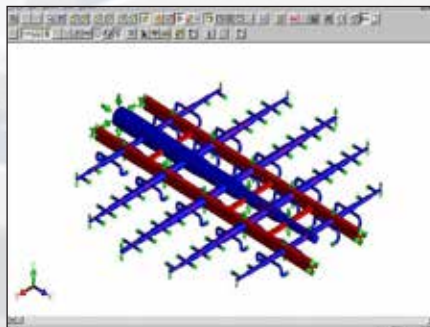
From nine locations in the United States and Canada RPS Field Service crews are available 24 hours a day seven days a week to provide the following services for composite equipment:

- Inspection
- Installation
- Training
- Spray-on Linings
- Thermoplastic Welding
- Maintenance
- Panel Linings
- Rubber Lining Repairs
- Fiberglass Lamination
- Emergency Repairs



Engineering Services

- Material Selection
- Specification
- Stress Analysis
- Finite Element Analysis
- Component & Equipment Design
- Inspection



Construction and Engineering Services



Installation of duct flanges and tee beams for scrubber rebuild during a smelter shutdown 🔄



Engineering, design, fabrication and installation of solvent extraction settler 🔄



Installation of large diameter P-Series pipe for cooling water application 🔄



Provide pipe stress analysis, fabricate and field join a 70m vertical stack 🔄



Design, fabrication, fit-up and installation of FRP structural beams and vacuum-infused alignment grids in jet bubbling reactors 🔄



Supply and install MAXAR (FEP/FRP) dual laminate pipe, provide pipe stress analysis and plastic welding training 🔄



Design, fabrication and installation of wet scrubbers in FGD applications 🔄



Lining of storage tank with 9' x 40' FRP panels 🔄



Facilities

RPS owns and operates 9 manufacturing/service facilities enabling us to handle large capital projects and provide timely local service.

United States — Alabama (Trussville and Mobile) • Louisiana (Lafayette) • Ohio (Franklin) • Texas (Houston) • Utah (Salt Lake City) • Virginia (Front Royal) • Pennsylvania (Pittsburgh)
Canada — Nova Scotia (Mahone Bay)

